

NOBO JATRA - NEW BEGINNING

Cyclone Amphan Impact Assessment Report

July 2020

Overview



Cyclone Amphan impact assessment locations

The cyclone Amphan impact assessment is a descriptive study and covered **98 villages** in the **8 worst affected unions** in **Koyra** and **Shyamnagar** to highlight the extent to which Nobo Jatra's direct participant households are affected.



Assessment Findings

Water, Sanitation and Hygiene

Access to Sanitation

3,223
households surveyed

32.5%
latrines were partially damaged

9.8%
were fully damaged and not usable.

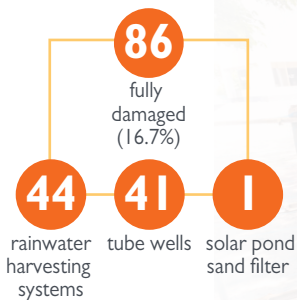
84% were in Koyra in comparison to
16% in Shyamnagar



Access to Water

516
Nobo Jatra supported water points surveyed

5,100
of Nobo Jatra's direct participants are not accessing safe water from the **86** fully damaged water points



2,514 women
2,586 men

Value Chains

Total loss of harvests reported by:

- 12.9%** of bottle gourd producers
- 5.6%** of bitter gourd producers
- 76.47%** of gift tilapia value chain producers reported total loss of harvests
- 22.72%** households (out of a total **713** surveyed) reported total loss of poultry

Number of value chain producers surveyed

Type of value chain	# of producers surveyed
Bottle gourd	186
Bitter gourd	178
Watermelon	162
GIFT tilapia	187

Partial losses to harvests reported by:

- 63.9%** bottle gourd producers
- 79.7%** bitter gourd producers



Ultra-Poor Graduation

7,099 ultra-poor graduation participants surveyed in the **8** unions



5.5% reported that their homes were fully damaged

2,576 households reported that their homestead gardens were fully damaged. This has an impact on food security as households depend on produce for a diverse nutritious diet and sell surplus

Access to Finances



49.9% of ultra-poor graduation participants in the **8** unions covered by the assessment have not been able to fully resume participation in VSLA's

Damages to Livelihoods



445 participants (45.9% of 969 women) lost their grocery businesses and
156 participants (38.6% of 404 women) lost handicrafts businesses.

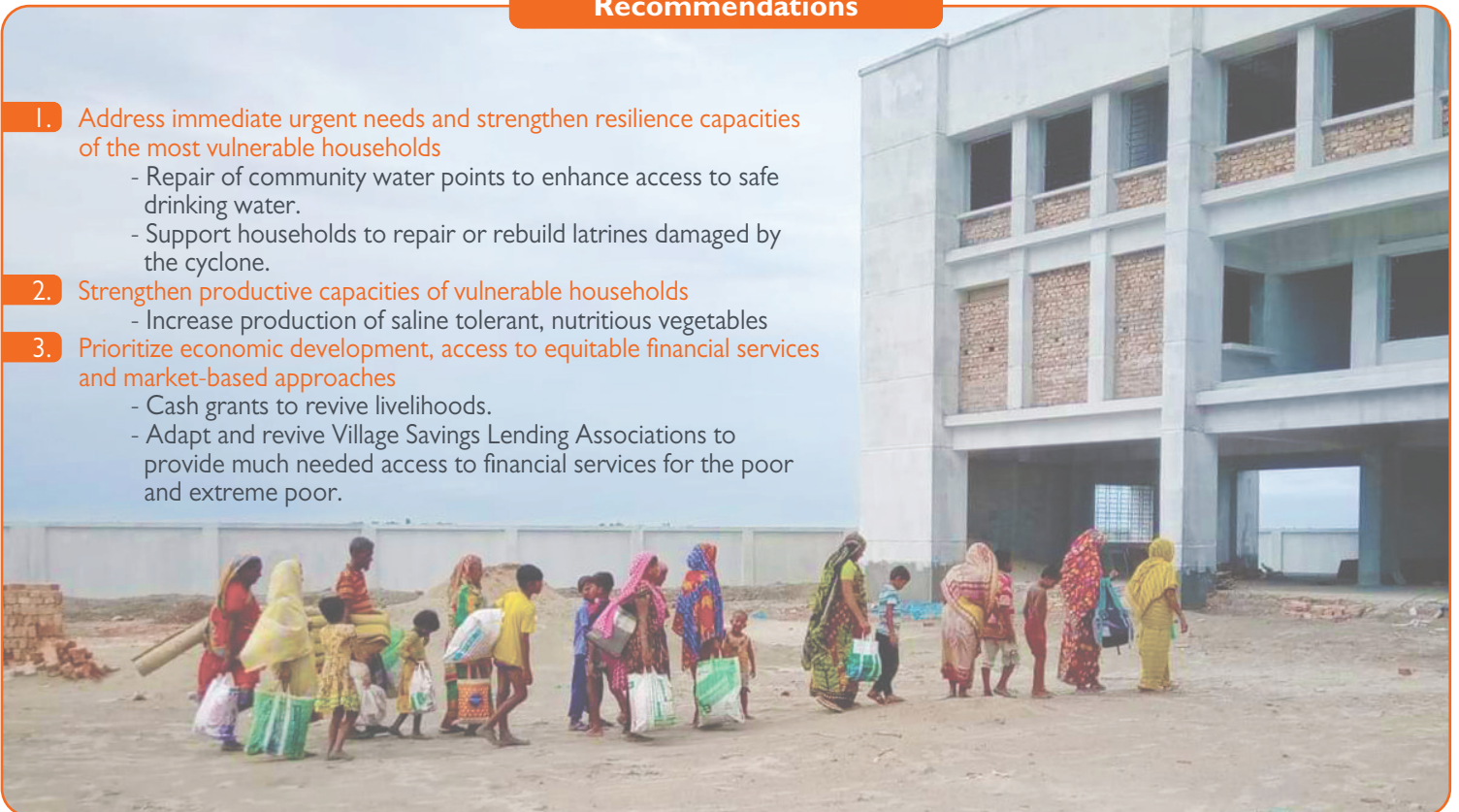
Access to Sanitation



1,290 latrines fully damaged
1,988 latrines partially damaged

Recommendations

1. Address immediate urgent needs and strengthen resilience capacities of the most vulnerable households
 - Repair of community water points to enhance access to safe drinking water.
 - Support households to repair or rebuild latrines damaged by the cyclone.
2. Strengthen productive capacities of vulnerable households
 - Increase production of saline tolerant, nutritious vegetables
3. Prioritize economic development, access to equitable financial services and market-based approaches
 - Cash grants to revive livelihoods.
 - Adapt and revive Village Savings Lending Associations to provide much needed access to financial services for the poor and extreme poor.



www.wvb-nobojatra.org



<https://www.facebook.com/WVBangladesh>



<https://twitter.com/wvbangladesh?lang=en>

This infographic is made possible by the generous support of the American people through the United States Agency for International Development (USAID). The contents are the responsibility of World Vision Inc. and do not necessarily reflect the views of USAID or the United States Government.

© 2020 World Vision Bangladesh. All rights reserved